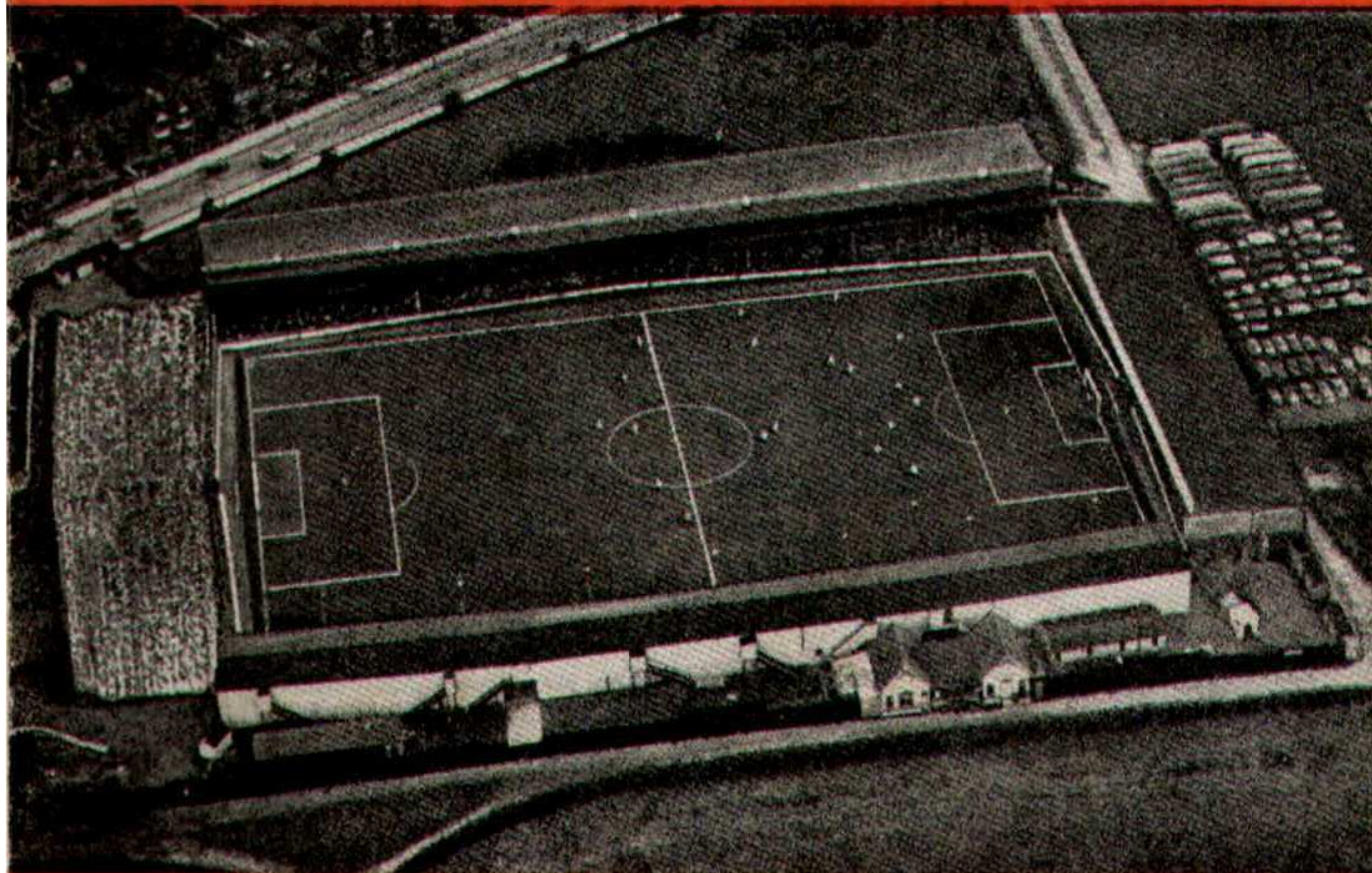




# SWINDON TOWN FOOTBALL CLUB



SATURDAY, AUGUST 19th, 1961

DIVISION III

**SWINDON T. v. PORTSMOUTH**

Kick-off 3 p.m.

*Official Programme* **4d.**



---

**SOUTHERN LAUNDRY  
CO. LTD.**

*Launderers and Dry Cleaners*

TELEPHONE 4161

STATION RD., SWINDON

GO MODERN — GO ELECTRIC

for

TELEVISION, RADIO AND  
DOMESTIC APPLIANCES

**D. ROBSON**

22 HAVELOCK STREET

6602

Swindon

6602

*Make your Goal the*

**EAGLE HOTEL**

(Prop.: Tom Hamilton)

WORTHINGTON :: GUINNESS

DEVENISH BEERS :: BASS

REGENT ST., SWINDON

**LITTLE & CO. LTD.**

The Name Linked with Service  
and Value

*The Popular Ladies' and Men's  
Complete Outfitters*



31-32 FLEET ST., SWINDON

Telephone 2831

---

**NEXT MATCH . . .**

FOOTBALL COMBINATION

**SWINDON T. v. LEYTON O.**

TUESDAY NEXT, AUGUST 22nd, 1961

Kick-off 7.30 p.m.

---

*Visit —*

**THE  
GRANADA CAFE**

60 CRICKLADE ROAD, SWINDON

Where good food  
is served at a  
reasonable price

**LEESE, ING & Co. Ltd.**

Incorporating BARKER & CO.

*Mineral Water and  
Squash Manufacturers*



**LANSDOWN RD., SWINDON**

Telephone 2744/2320

---

**HULFORD MOTORS Ltd.**

**SELF DRIVE HIRE**

\*\*\*

Fleet of 1961 Fords  
Populars - Anglias - Consuls

\*\*\*

**SHRIVENHAM ROAD**

(200 yards from Football Ground)

Phone 4934

LARGE CAR PARK AVAILABLE

For Quality  
FLOWERS, FRUIT & VEGETABLES  
Also FROZEN FOODS

**CLARKE'S  
of Old Swindon**

Proprietors: A. G. G. & J. A. W. HUNT

64 DEVIZES ROAD - SWINDON

'Phone: 2337

ORDERS DELIVERED



# SWINDON TOWN FOOTBALL COMPANY LIMITED

Registered Office: COUNTY GROUND, SWINDON

---

## Directors:

Mr. W. J. CASTLE (Chairman)

Mr. H. E. LANE (Vice-Chairman)

Mr. B. T. HAMILTON (Hon. Treasurer)

Messrs. C. CHANDLER, J. DAVIES,

R. FRICKER, C. J. GREEN, F. PLYER, H. WILLIAMS and K. H. WILMER.

Manager: B. J. HEAD.

Secretary: R. A. MORSE.

---

Vol. 12

SATURDAY, AUGUST 19th, 1961

No. 1

---

## Club Notes

The New Deal Season — the name applied to the one beginning today. New contracts, greater freedom and higher wages for the players. Spectators hope for, and will no doubt expect, improved football. The close season has been marked by demands, negotiation, and frequently requests for transfer, because of the new wage structure. Many clubs have been troubled by what the Press term "Rebels", due to their seeking higher wages.

Swindon has been most fortunate; all the lads soon re-signed when told their new terms. Obviously they were satisfied knowing the position on both sides. We thank the players for their attitude. It shows also, we feel, a fine co-operative club spirit. They are happy in playing for Swindon, and that should go a long way in bringing excellent results on the playing field.

Last year we said: "The season beginning today appears to be one of great possibilities, we have a large number of young players." Supporters will remember that after the form shown in the "practice match", it was decided to field almost a team of young and untried players. Many of us came to the first game with a certain amount of trepidation, but how the young lads rose to the occasion. We all know how they responded, and the excellent style of football they played.

Now comes the testing time. Our players are a year older, stronger, and with a season's experience behind them. Can they continue to improve? If so the hopes of all of us may be realised sooner than anticipated. The earnest wish of all of us: may Skipper Maurice Owen crown what is to be his third benefit season by leading his team to the top of the league table.

Mention was made in the programme of two projects to be embarked upon by the Board. The installation of new floodlights

Continued on page 4



---

## THE WALCOT CHEMIST

WIDE RANGE OF COSMETICS, PERFUMES,  
BABY NEEDS AND PHOTOGRAPHIC GOODS

10 SUSSEX SQUARE - WALCOT  
TEL. 6680

---

## M. J. REYNOLDS

*Grocer*

152/154 CRICKLADE ROAD  
5479 SWINDON 5479  
COOKED HAM OUR SPECIALITY

---

## WATSON'S CENTRAL NEWSAGENCY LTD.

*Swindon's Leading Wholesaler*

1 WELLINGTON STREET, SWINDON  
Tel. 2049

---

## L. WOLLEN

OFF LICENCE

*WINES & SPIRITS*

Arkell's Ales and Stout

373 Cricklade Rd., Swindon  
Deliveries Daily Phone 3508

---

### CLUB NOTES—continued

and the provision of a hostel. The former came into operation on 28th September, 1960, and the latter in November, 1960. Both have proved to be great assets.

The new season sees an alteration in the formation of fixtures. The Reserve side will play in the mid-week section of the Football Combination. All home matches will be played on Tuesday evenings, kick-off 7.30 p.m., and they should prove most attractive, with Division I clubs such as Birmingham, Fulham and Chelsea, and many Division II sides providing the opposition.

Mention was made regarding improvement in the programme, at the Annual Meeting of the Company. We are most grateful to the speaker, and we hasten to add how pleased we are to receive suggestions for the programme or any of the club activities. On many occasions we have considered the introduction of photographs, but the whole receipts from the sale of programmes would not cover the cost of the "block" required. However, we will endeavour to make this leaflet more attractive, and also give you, the readers, all the club

Continued on page 7

---

FOR ALL YOUR ANGLING NEEDS  
CONSULT

## FRANK WOODWARD

Swindon's Fishing Tackle Specialist

25 HAVELOCK ST., SWINDON  
PHONE 3879

---

WE ARE SPECIALISTS IN —  
OUTSIDE CATERING AND LICENSED BARS  
FOR WEDDINGS, FETES, SPORTS DAYS, etc.

## THE MASONS ARMS HOTEL

31 HIGH STREET - SWINDON 3522

---

## H. E. LANE

(REGENT STREET) LTD.

*The Pork Sausage Specialists*

117 Victoria Road, Swindon  
Telephone: 2336

---

## COMLEY'S

*Modern Music Centre*

26 HAVELOCK ST., SWINDON

RECORDS - MUSIC - INSTRUMENTS

Top Twenty "Pops" always in stock  
and wide selection of Jazz and Classics

PERSONAL SUPERVISION

Phone 3874



## FIXTURES AND RESULTS TO DATE

### DIVISION III

1961

Aug. 19	Portsmouth	H
21	Coventry City	A
26	Crystal Palace	A
29	Coventry City	H
Sept. 2	Bournemouth	H
4	Queen's Park R.	A
9	Watford	A
16	Hull City	H
19	Barnsley	H
23	Northampton T.	A
27	Barnsley	A
30	Lincoln City	H
Oct. 3	Grimsby Town	H
7	Brentford	A
10	Grimsby Town	A
13	Reading	H
17	Queen's Park R.	H
21	Bristol City	A
28	Bradford	H
Nov. 4 (1)		
11	Shrewsbury Tn.	H
18	Peterborough U.	A
25 (2)		
Dec. 2	Newport County	A
9	Southend U.	H
16	Portsmouth	A
23	Crystal Palace	H
26	Halifax Town	A
30	Halifax Town	H

1962

Jan. 6 (3)	Notts County	A
13	Bournemouth	A
20	Watford	H
27 (4)	Port Vale	H
Feb. 3	Hull City	A
10	Northampton T.	H
17 (5)	Lincoln City	A
24	Brentford	H
Mar. 2	Reading	A
10 (6)	Bristol City	H
17	Bradford	A
24	Notts County	H
31 (S.F.)	Shrewsbury	A
Apr. 7	Peterborough U.	H
14	Port Vale	A
20	Torquay Utd.	H
21	Newport County	H
23	Torquay Utd.	A
28	Southend Utd.	A
May 5 (Final)		

### FOOTBALL COMBINATION

1961

Aug. 22	Leyton Orient	H
Sept. 6	Southend Utd.	A
13	Portsmouth	A
20	Bournemouth	A
26	Birmingham	H
Oct. 4	Aldershot	A
10	Watford	H
Nov. 1	Millwall	A
7	Fulham	H
14	Southampton	H
22	Coventry City	A
29	Reading	A
Dec. 5	Brighton	H
12	Brentford	A
19	Charlton	H

1962

Jan. 3	Chelsea	A
9	Chelsea	H
17	Leyton Orient	A
23	Portsmouth	H
31	Birmingham City	A
Feb. 6	Bournemouth	H
13	Watford	A
20	Aldershot	H
26	Queen's Park R.	A
Mar. 6	Millwall	H
14	Fulham	A
20	Southend Utd.	H
28	Southampton	A
Apr. 3	Coventry City	H
10	Reading	H
17	Brighton	A
23	Brentford	H
May 2	Charlton	A
To be arranged	Q.P.R.	H



---

# Our Visitors

## PORTSMOUTH F.C.

It is our privilege to welcome the Directors, Officials and Players of Portsmouth Football Club for our opening game of the 1961-62 season. The Club has a proud record both in the Football League and the F.A. Cup and we are pleased to have them as our visitors today.

The Portsmouth Club is anxious to make a speedy return to a higher division in the league and we can expect today's game to be a stern struggle for the points at stake.

Details of the players from which the team will be selected are as follows:-

### Pen Pictures of Players

#### BEATTIE, R. (Goalkeeper)

Transferred from Glasgow Celtic in October, 1959. Has represented Scotland in under 23 internationals. Height 5ft. 11in. Weight 12st. 10lb.

#### SHEARING, P. (Goalkeeper)

Joined the club this Summer from West Ham. Played at Wembley for Hendon in the Amateur Cup Final. Height 6ft. 1in. Weight 13st. 2lb.

#### RUTTER, C. (Right Back)

Joined Portsmouth from the local schoolboy's team 10 years ago. As a youth represented England. Played most of his football as a centre-half. Height 5ft. 11in. Weight 11st. 11lb.

#### GUNTER, P. (Right Back)

Now in his 12th season. Another local ex-schoolboy. Played for England 'B' v. France in 1952. Started his career as a centre-half. Height 6ft. Weight 12st. 5lb.

#### WILSON, A. (Left Back)

Scotsman from Aberdeen who joined the Club direct from school 11 years ago. Represented Scotland in full Internationals. Height 5ft. 8in. Weight 11st. 11lb.

#### BROWN, A. (Right Half)

Transferred from Luton Town before the deadline in March 1961. Scottish International inside forward now playing at wing half. Previous Clubs East Fife and Blackpool. Height 5ft. 10in. Weight 12st. 2lb.

#### CHAPMAN, S. (Right Half)

The only Irishman on the staff. Played in 'B' Internationals for his country. Has also played inside forward. Transferred from Mansfield Town 1958. Height 5ft. 10in. Weight 11st. 4lb.

Continued on page 12



## C. Dunn & Son

BUILDERS & DECORATORS  
Alterations, Renovations, Conversions  
Plumbers and Sanitary Engineers  
503 CRICKLADE ROAD Tel. 2522

FOR PAINTS OF GOOD QUALITY  
**H. S. HODGES & SONS**  
(SWINDON) LTD.

CRICKLADE ROAD - SWINDON  
PHONE 2422

Dulux, Brolac, Friary, Valspar, Wallcharm, etc.

## NOTTON'S CAFE

COUNTY ROAD

200 yards from Ground

**RIGHT ON THE BALL**

## Harold Fleming

24 REGENT CIRCUS - SWINDON  
Phone 22813



FOR ALL SPORTS EQUIPMENT  
Also, Scout, Guide, Cub and Brownie Wear

### CLUB NOTES—continued

news. Unfortunately the Press is often first. In the next issue we hope to give you something of the background of our players—and of course our hopes.

In this the first programme, we once again pay tribute to a fine organisation of men and women who voluntarily help the club—the St. John Ambulance Brigade. Now a special request to all spectators. A large amount of money has been spent, and is still being spent, on improving the surface of the playing pitch. It is essential to get this as level as possible, to help our lads in their style of play.

Please do not at any time climb over the fence, and cross the playing pitch. Apart from damaging the surface of the ground, and the nets, spectators swarming around players and officials bring no credit to the club. In fact it could lead to difficulties.

We cannot close these notes without reference to the loss of our President for many years, H. V. Slade, Esq., O.B.E., J.P., a gentleman and a sportsman. He was a splendid example to all, and he will be greatly missed. The club, and everyone connected with it, send their condolences to the relatives.

## GODDARD & Co.

*Wholesale and Retail*

WINE - SPIRIT - BEER  
AND CIDER MERCHANTS

9 REGENT STREET, SWINDON  
Telephone 2415

Also at  
4 WINGATE PARADE, SWINDON

We are your **Main Distributors** for  
**VAUXHALL** and **JAGUAR** cars  
**BEDFORD** Vans and Trucks, etc.

Any make of Car or Truck  
supplied - Used Vehicles a  
specialised part of our  
business.

**SKURRAY'S**  
**SWINDON**

Telephone: 2266



## H. HIBBERD LTD.

Plant Hire Contractors

\*\*\*

TRACTORS and SCRAPERS  
BULLDOZERS  
DOTT SHOVELS  
DIGGERS  
ROAD ROLLERS

\*\*\*

40 NEWPORT STREET, SWINDON

Telephone 6125

## Swindon Bacon Curing Co. Ltd.

*Specialists in  
Bacon, Pork & Cooked Ham*

50 FLEET STREET  
SWINDON

Telephone: 2122

## WARNES (Swindon) Ltd.

Electrical Contractors  
Radio and Television

Contractors to:  
SWINDON TOWN FOOTBALL CLUB

51/52 COMMERCIAL RD., SWINDON

'Phone 6346/7

160 COUNTY RD., SWINDON

'Phone 6346/7

9 SWINDON ST., HIGHWORTH

'Phone 379

7 CLIVE PARADE, SWINDON

'Phone 6346/7

## DAY RETURN TICKETS

On Weekdays and Sundays (services permitting), available in each direction by any train the same day. From Swindon Junction to:-

	2nd Class
Bath Spa	7/6d.
Bristol (T.M.)	9/0d.
Weston-super-Mare	11/6d.

Other fares available. Ask for pamphlet B7/411, giving full information.

**BRITISH RAILWAYS**

Western Region

## W. B. CARTER

Newsagent, Tobacconist and Confectioner  
Large selection of Boxes of Chocolates  
always in stock

CORONA, TIZER, DRINKS, etc.

Agents for Wall's Ice Cream

\*\*\*

188/190 FERNDAL RD., SWINDON

Telephone: 3089

## MILLS & MER

SWINDON TOWN v. PORTSMOUTH

SWINDON T

RIGHT WING

Colours: RED SHIRTS,

Burton

Jones (2)

Morgan (4)

Owen (5)

Summerbee (7) Hunt, E. (8) McPherson

Referee—

Mr. G. W. Pullin  
(Bristol)



Cutler (11) Middleton (10) Saunders (

Dickinson (6)

Snowdon

Wilson (3)

Beattie

PORTSMOUTH

LEFT WING

These teams are subject to

16-17 BRIDGE ST. S

ENGLAND'S QUALITY  
SERVICE

Your Car washed in under

**THE INSTANT**

6/- ANY MAKE —

Local Station

MARLBOROUGH ROAD  
SWINDON

QUEENS ROAD  
READING



Make your goal . .

# M'ILROYS RESTAURANT

**Top of the Catering League**  
COFFEE - LUNCHES - TEAS  
Parties catered for.  
Regent Street, Swindon. Tel. 5294

## THE PLESSEY COMPANY Ltd.

After years of achievement have great expansion plans for the future.

**TECHNICAL STAFF  
CLERICAL STAFF  
MANUAL WORKERS**

are essential for this progress.

Interested persons please apply to the Personnel Department.

## MERRICKS LTD.

**YOUTH** Kick-off 3 p.m.

**WINDON TOWN**

SHIRTS, WHITE SHORTS

LEFT WING

Burton

Trollope (3)

Owen (5)

Woodruff (6)

McPherson (9) Hunt, R. (10) Darcy (11)

Linesmen —

Red Flag —

Mr. B. Grey  
(Portishead)

Yellow Flag —

Mr. L. A. Howells  
(Port Talbot)

unders (9) Gordon (8) Campbell (7)

nowdon (5) Brown (4)

Gunter (2)

Beattie

**RTSMOUTH**

re subject to alteration

RIGHT WING

**ST. SWINDON** PHONE 5365

## QUALITY CAR WASHING SERVICE

in under 5 minutes by

**NT CAR WASH**

**E — 4 WASHES £1**

al Stations:

ENS ROAD  
READING

QUEENS ROAD  
BRISTOL

U  
P  
H  
O  
L  
S  
T  
E  
R  
E  
R  
S  
•  
R  
E  
M  
O  
V  
A  
L  
S

INSIST ON

# Garrard

**EQUIPMENT**



For Superb Tape and Record Playing



Fitted by the World's leading manufacturers.

## WILSONS (SWINDON) LTD.

BUILDERS OF  
MODERN ATTRACTIVE HOUSES  
AND BUNGALOWS

All enquiries to Head Office:

**90 COMMERCIAL ROAD  
SWINDON 6361-3**



ONE QUALITY ONLY—THE BEST !  
FRESH SUPPLIES DAILY

## York Road Fisheries

SWINDON

WET, DRY or FRIED Tel.: 3680

Rent your T.V. - Washing Machines  
Spin Dryers - Electrical Installations  
from

### D. V. HOLLAMBY LTD.

138 High St., Wootton Bassett, Wilts.  
Telephone 295

ALL LEADING MAKES IN STOCK

**DEMPSTER ENTERPRISES**, offer a modern fleet of 4 and 6 seater self-drive hire cars, for your pleasure and convenience. For advance bookings apply:-

### Dempster Enterprises

38 VICTORIA ROAD, SWINDON

Tel. 6460

**Howard Autos**, Swindon's Main Cotton Motor Cycle distributors always have a good selection of guaranteed used cars for you to choose from.

### HOWARD AUTOS

134/5 MANCHESTER ROAD

Tel. 6603

and at 3 WELLINGTON STREET, SWINDON

Have you purchased your ticket for the

HALF-TIME

# JACKPOT DRAW

TICKETS 6d. each—on sale on the Ground

FOUR PRIZES

Proceeds to the Development Fund

## 'BAILEY'S'

2 Cheney Manor Road - Swindon

NEWSAGENT :: TOBACCONIST  
CONFECTIONER

Personal Attention and Satisfaction  
always assured.

MEET YOUR FRIENDS FOR AN  
ENJOYABLE EVENING AT

## THE KINGSDOWN INN

(Host A. W. Yann)

FULLY LICENSED - ARKELL'S BEERS  
SNACKS, Etc.

Stratton St. Margaret. Tel.: 3283

## A. WHEELER & SON

330 CRICKLADE ROAD

PHONE 2095

FOR QUALITY COALS  
AND PROMPT SERVICE

Lowest Terms for Self Drive Cars

\*\*\*

Free Deliveries - Glasses loaned free  
for your Wines, Spirits and Beers

115 CRICKLADE ROAD

"The Corner Off Licence"

Ring 4711 or call at



---

# Supporters' Club Notes

Once again the Directors and Management of Swindon Town F.C. have kindly allowed us space in the Official Programmes in which to publicise our activities and to deal with matters which, from time to time, may be of interest to our members, and to the footballing public generally.

We trust that the coming season will prove to be a happy and successful time for all at the County Ground. If hard work can achieve anything, then success should follow, for all concerned, Directors, Management and Players are tackling their respective work with a sense of responsibility and enthusiasm.

The past few months have seen important changes in economics, both in football and in wider spheres, and in the football world it became inevitable that increased admission charges should be imposed.

Some prices, however, remain unaltered. For instance, it is still possible to become a member of our Club at the modest sum of

sixpence for the season. Last season produced £305 by this means. Please attend at our office and renew your membership if you have not already done this. New members, also, are always welcomed.

Again, the weekly fee for our competition remains at one shilling. This competition produced £11,230 last season, and we hope to improve on this figure.

If anyone interested is unable to obtain a ticket, a visit to our office will soon solve the problem.

Occasionally, through retirements from work, or removals from the district, we lose the services of competition collectors. Will any supporters who feel able to assist us in this way please get in touch with our competitions secretary, Mr. F. N. Deane, either at 93 Clifton Street, or at our Office before any match?

We learn that the Directors of Swindon Town F.C. themselves will also operate a competition. Let us say at once that this is not in opposition to or in substitution for our own, but is an additional effort to raise funds to defray the outstanding debt on the Floodlight Installation. We wish this effort every success, and commend it to all supporters.



---

## **OUR VISITORS—continued**

### **SNOWDON, B. (Centre Half)**

Transferred from Blackpool September 1959 for £12,000. Now playing the class of football that such a transfer fee couldn't buy him now. Height 5ft. 11in. Weight 12st. 11lb.

### **DICKINSON, J. (Left Half)**

Now in his 17th season. Tremendous Club man and a wonderful example to all players. Represented his country on 49 occasions. The only remaining member of the great championship team of 1948-49-50. Height 5ft. 10in. Weight 12st. 11lb.

### **HARRIS, H. (Left Half)**

Transferred from Newport County in July 1958 for £10,000. Played most of his football as an inside forward. Seems to have settled now in the wing half berth. Height 5ft. 9in. Weight 11st. 7lb.

### **CAMPBELL, J. (Outside Right)**

Transferred from West Brom. Albion in the Summer of 1959 as an inside right. After an in and out spell settled on the wing. Can also play at outside left. Height 5ft. 6in. Weight 11st.

### **GORDON, J. (Inside Right)**

Rejoined the club after two years with Birmingham City. Transferred to Birmingham for £16,000 and came back to assist the Club in their fight to stay in the Second Division. Height 5ft. 8in. Weight 10st. 12lb.

### **MIDDLETON, H. (Inside Right)**

Transferred from Scunthorpe Utd. June 1961. Made his mark as a centre forward with Wolverhampton before being sold at a large fee. Height 5ft. 10in. Weight 11st. 7lb.

### **SAUNDERS, R. (Centre Forward)**

Commenced his career with Everton as a schoolboy. Had a short spell with Tonbridge in the Southern League. Returned to League Football with Gillingham and transferred to Pompey in September 1958. Height 5ft. 10in. Weight 12st. 9lb.

### **CUTLER, R. (Outside Left)**

Has seen service with W.B.A. and Bournemouth before joining Portsmouth for £7,000 in September, 1958. Member of Bournemouth Cup team of three years ago. Height 5ft. 6in. Weight 9st. 7lb.



The Rendezvous of all Sportsmen . . .

## THE CROWN INN

(Host: Frank Plyer)

Arkell's Best Ales : Fully Licensed  
Snacks, etc.

STRATTON ST. MARGARET Tel. 2339

SUPPORT YOUR HOME

## CIVIL DEFENCE

Plays a vital part in saving lives

Particulars:

CIVIC OFFICES - SWINDON

WIN OR LOSE !

THE FOOD IN THE

## China Restaurant

IS BEST

\* \* \*

107 COMMERCIAL ROAD

SWINDON 6888

Open Daily 12 noon - 11.30 p.m.

For all Chinese and English Dishes

### KEY OF THE BOARD

A—Arsenal v. Burnley  
B—Sheffield Utd. v. Wolverhampton  
C—Bristol R. v. Liverpool  
D—Walsall v. Sunderland  
E—Halifax T. v. Barnsley  
F—Lincoln C. v. Bournemouth  
G—Notts. C. v. Bristol C.  
H—Peterborough U. v. Hull C.  
I—Reading v. Coventry C.  
J—Torquay U. v. Crystal P.  
K—Watford v. Northampton  
L—Bradford C. v. York C.  
M—Carlisle v. Aldershot  
N—Chester v. Oldham  
O—Gillingham v. Doncaster  
P—Mansfield T. v. Exeter C.

## COATE GARAGE



THE ALCOHOL FUEL

REPAIRS  
SERVICING  
TYRES

★

OVERHAULS  
REBORING  
WELDING

Props.: E. V. & W. H. Mattick

MARLBOROUGH ROAD, SWINDON

For something a little different, try

## DON JONES

HIGH CLASS CONFECTIONER  
AND TOBACCONIST

Always a good selection of  
SUCHARDS' - TOBLER  
TERRY'S

Quality Chocolates and Presentation  
Boxes

112 COMMERCIAL ROAD

6012

SWINDON

6012



---

## Typewriters from £10

FULLY GUARANTEED

**DOBELL SHEARMAN  
& CO. LTD.**

26 HIGH ST. & 33 FARINGDON RD.,  
SWINDON Telephone 4961

Only 800 yards to your Dream Car—

**NEW ALPHA MOTOR Co.**  
(SWINDON) LTD.

**QUEENS DRIVE, SWINDON**

Tel. 5062/63

FOR TOP QUALITY USED CARS

Open 7 days per week from 7 a.m. to 10.30 p.m.  
Servicing for all makes of cars

---

## TICKETS

Tickets for seats in the Stand for Division III matches may be booked in advance on application to the office, or, by post. Postal applications should be accompanied by a remittance and stamped, addressed envelope.

Please note the new prices for Stand tickets.

### NEW STAND

Blocks 'A' and 'E'	...	4/6d.
Blocks 'B' and 'D'	...	5/6d.
Block 'C'	...	6/6d.

### OLD STAND

Blocks 'F', 'G' and 'I'	...	4/-d.
Block 'H'	...	5/6d.

---

### Chappell's Funeral Service

(Fun. Dir.: A. A. Winchcombe)

**196 COUNTY ROAD  
SWINDON**

24 hour Service Tel. 6073

*Your local "TEAM" for RENAULT  
Sales and Service*

**CORONATION  
CAR SALES**

**67/68 VICTORIA ROAD**

Telephone 4964

---



---

**SEA VIEW HOLIDAY  
CAMP**

YOUR HOST — Mr. BENNETT

\*\*\*

**WYKE REGIS - WEYMOUTH  
Dorset**

"COAL!"  
"COAL!"  
"COAL!"

**J. WILMER**

**ST. MARGARET'S ROAD, SWINDON**  
Telephone 2535

---

MEET YOUR FRIENDS AT THE

***Southbrook Inn***

(Hosts: Mr. and Mrs. Jack Scutts)

FULLY LICENSED  
CLINCH BEERS, ETC.

**SOUTHBROOK STREET, SWINDON**  
Tel.: 5837

**STOP! LOOK!**

**NU-HOMES**

For all Household Fitments

Paints - Emulsions - Wallpapers  
Kitchen Units and Bathroom Suites,  
etc.

**176a Manchester Road**  
TELEPHONE 2178

---

**TONIGHT—SATURDAY, AUGUST 19th, 1961**

WILTSHIRE PREMIER LEAGUE

**SWINDON T. 'A' v. WESTBURY**

**AT THE COUNTY GROUND**

**Kick-off 6.30 p.m.**

---

**BRITANNIA  
MOTORS**

Proprietor: A. GODWIN

**205-206 RODBOURNE ROAD  
SWINDON PHONE 5303**

- **TYRES**  
NEW AND REMOULD  
CASH OR EASY PAYMENTS
- **ACCESSORIES**
- **QUICK SERVICE AND REPAIRS**  
AT SWINDON'S MOST MODERN  
LUBRICATION BAY AND  
WORKSHOP

*For High Class  
Central Heating, Plumbing  
Painting and Decorating  
Electrical Installations  
and Repairs*

•  
**NORTH WILTS**

**Sanitary & Heating  
Co. Ltd.**

**NEWPORT ST., SWINDON**

'Phone: 5373/4



Always at your service

**L. BIBBY**

For all Types, Rags, Iron and Metal,  
etc. Spot Cash Paid. Please Telephone  
2101 and our van will call.

THE PADDOCK, ERMIN STREET  
STRATTON ST. MARGARET

**Walcot Greengrocer**

G. E. STAMMERS

☼

**1 SUSSEX SQUARE  
SWINDON**

SWINDON **2526**

*CAN ALSO BE YOUR LUCKY NUMBER ! ! !  
if you ring*

**HOLMES & LUCAS**

14A REGENT STREET :: SWINDON

*for all your*

**TELEVISION, RADIO AND ELECTRICAL REQUIREMENTS**

**LUCKY PROGRAMME**

**3860**

Please retain your programme. An announcement will be made at half-time of two numbers and the holders will be given a stand seat at the next Division III game. The persons who purchased the programmes bearing the winning numbers should call at the office after the game and claim their seats.

**FRIED FISH AND CHIPS**

Always Fresh - Always Hot

**WALCOT FISHERIES**

**Sussex Square**

Wet fish and frozen foods all refrigerated display.

**HATTON'S NEWSAGENCY**  
A. J. D. WOODHOUSE & A. SMITH  
Newsagents & Tobacconists & Confectioners  
Agents for Wessex School of Motoring  
Main Booking Agents for Millers Coaches  
6 REGENT CIRCUS (NEAR G.P.O.)  
Telephone Swindon 2731

For Insurance or Hire Purchase  
CARS - CARAVANS - MOTOR CYCLES, etc.  
Consult

**D. & H. HENTY LTD.**

**54 COMMERCIAL RD., SWINDON**  
SWINDON 5258

**PANKHURST**  
**The Palace, Gorse Hill,**  
**Swindon**

MOTOR CYCLE - SCOOTER AND  
THREE-WHEELER SPECIALISTS

Open Mon. to Sat. 9 a.m. - 8 p.m. Phone 5466

**MORGAN'S**

IRONMONGERS

**C.A.S.M.S. (Swindon) Ltd.**

2 SUSSEX SQUARE, WALCOT, SWINDON  
also at 163 RODBOURNE ROAD Tel. 2516

Paraffin services to all areas town and country  
Everything for the home  
Precision Tools for Engineering Trade,  
Tools for all trades

**Maylott Studios**

For GROUP & SPORT Photographs  
OFFICIAL PHOTOGRAPHER TO  
SWINDON TOWN FOOTBALL CLUB

**31 FARINGDON RD. Tel. 2792**